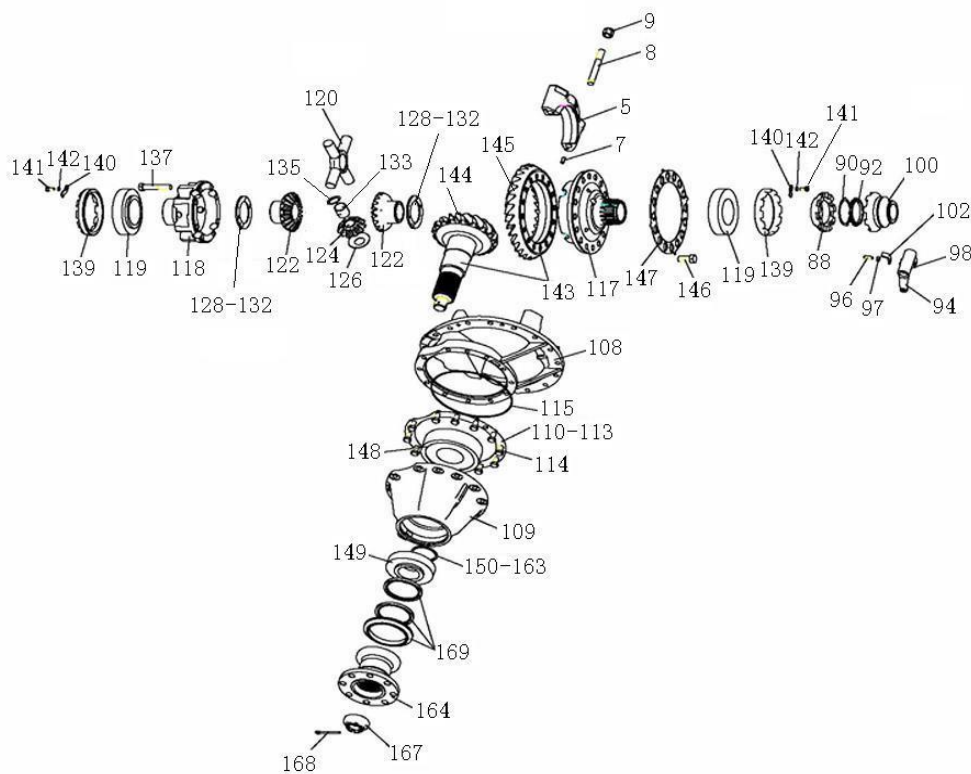


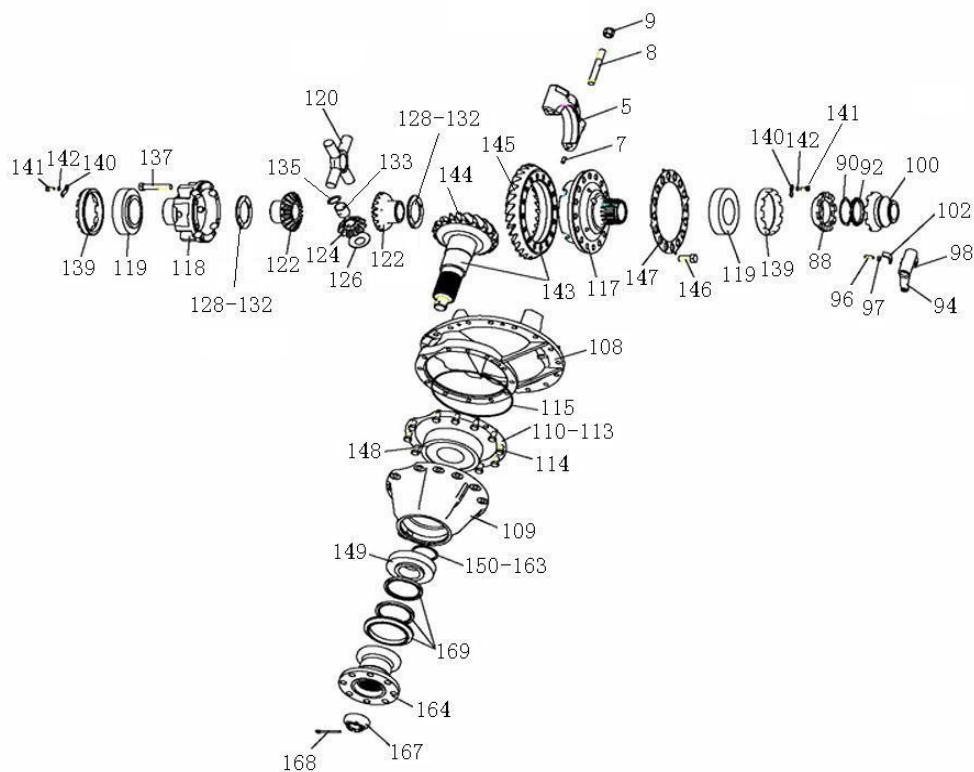
4.02 STEYR单后桥主减速器/STEYR Single Axle Main Reducer



4.02 STEYR单后桥主减速器/STEYR Single Axle Main Reducer

序号	零部件图号	名称	Part Name	数量	备注
No.	Part No.			Qty	Remark
3	199012320097	主减速器(后桥)	Final drive (rear axle)	1	
5	WG9012320002	差速器轴承盖	Differential bearing cover	2	
7	Q5210820	园柱销	Cylinder pin	4	
8	Q12316120	双头螺柱	Screw	4	
9	190003888459	自锁螺母	Nut	4	
88	WG3809320155	固定啮合套	Shifting sleeve	1	
90	WG3809320158	锁止垫片	Lock gasket	1	
92	WG3809320157	园螺母	Round nut	1	
94	WG9012320014	拨叉	Fork	1	
96	Q2800825	开槽锥端紧定螺钉	Screw	1	
97	Q340B08	1型六角螺母	Nut	1	
98	WG1800 320077	拨叉活动块	Block	2	
100	WG3809320156	滑动啮合套	Sliding shifting sleeve	1	
102	WG9012320023	弯板	Angle plate	1	
104	WG2297Y4835	铭牌	Nameplate	1	
106	190003904529	标牌铆钉--铆钉	Rivet	2	
107	AZ9231320724	后桥中段	Middle of the rear axle	1	Incl.(108-169)
108	199012320098	主减速器壳	Reductor housing	1	
109	WG9012320131	轴承座	Bearing seat	1	
110	WG9012320173	调整垫片(厚0.1)	Adjusting shim	1	

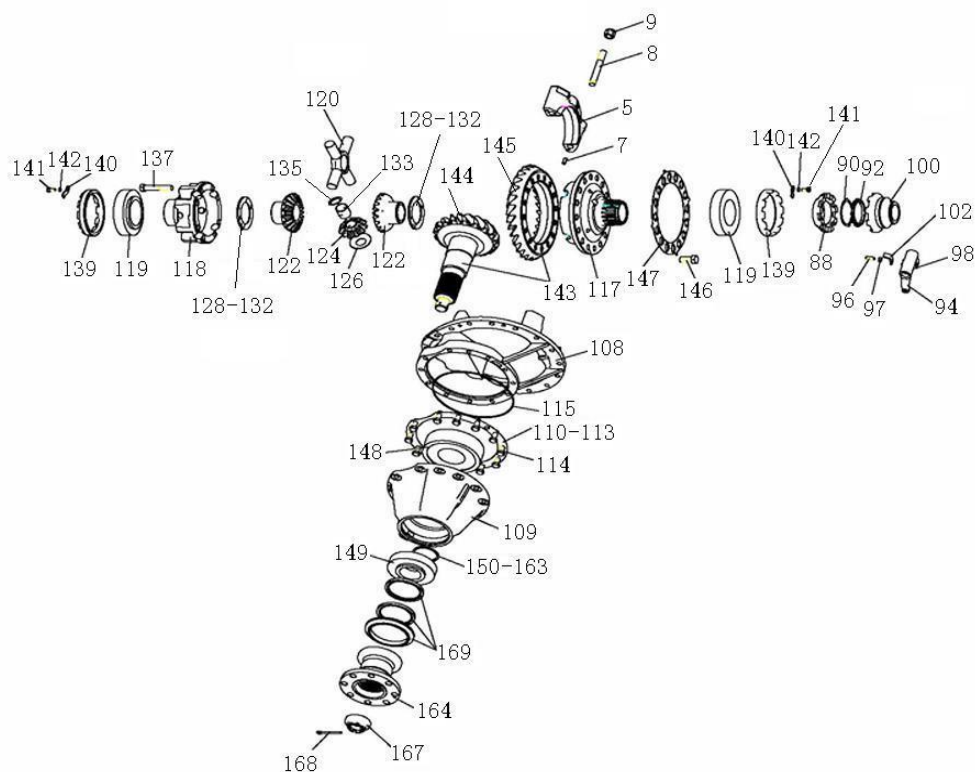
4.02 STEYR单后桥主减速器/STEYR Single Axle Main Reducer



4.02 STEYR单后桥主减速器/STEYR Single Axle Main Reducer

序号	零部件图号	名称	Part Name	数量	备注
No.	Part No.			Qty	Remark
111	WG9012320174	调整垫片(厚0.15)	Adjusting shim	1	
112	WG9012320175	调整垫片(厚0.4)	Adjusting shim	1	
113	WG9012320176	调整垫片(厚1)	Adjusting shim	1	
114	Q150B1230TF2	六角头螺栓	Screw	12	
115	WG9012320133	密封圈	Seal ring	1	
116	AZ9231320274	差速器壳	Differential housing	1	incl(117,118)
117	AZ9231320168	差速器壳(左)	Differential housing(left)	1	
118	AZ9231320164	差速器壳(右)	Differential housing(right)	1	
119	190003326148	圆锥滚子轴承	Tapered roller bearing	2	
120	AZ9231320150	十字轴	Spider	1	
122	WG9231320151	半轴齿轮	Half shaft gear	2	
124	WG9231320152	行星齿轮	Planetary gear	4	
126	WG9231320153	行星齿轮垫片	Shim	4	
128	AZ9231320154	调整垫片	Adjust shim	1	
129	AZ9231320155	调整垫片	Adjust shim	1	
130	AZ9231320156	调整垫片	Adjust shim	1	
131	AZ9231320157	调整垫片	Adjust shim	1	
132	AZ9231320158	调整垫片	Adjust shim	1	
133	WG9231320159	衬套	Bush	4	
135	WG9231320160	衬套挡圈	Snap ring	4	

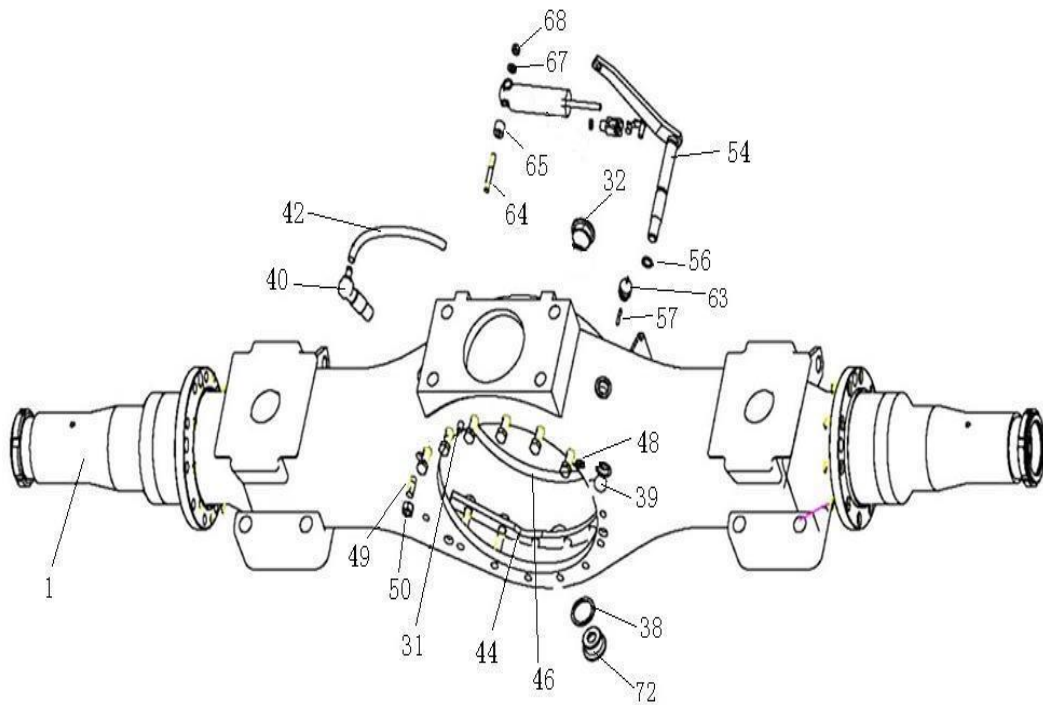
4.02 STEYR单后桥主减速器/STEYR Single Axle Main Reducer



4.02 STEYR单后桥主减速器/STEYR Single Axle Main Reducer

序号	零部件图号	名称	Part Name	数量	备注
No.	Part No.			Qty	Remark
137	WG9231320169	六角头螺栓	Screw	8	
139	WG3809320159	差速器轴承调整螺母	Adjust nut	2	
140	WG79000320027	止动片	Retainer sheet	2	
141	Q150B0816	六角头螺栓	Screw	2	
142	Q40308	弹簧垫圈	Spring washer	2	
143	WG9231320912	锥齿轮付 29/21	Pinion and crown gear pair	1	
146	Q151B1635TF2	六角头螺栓	Screw	16	
147	WG9114320003	锁片-从动锥齿轮螺栓	Screw	1	
148	190003326546	圆锥滚子轴承	Tapered roller bearing	1	
149	190003326236	圆锥滚子轴承	Tapered roller bearing	1	
150	WG880 320002	调整垫片	Adjusting shim	1	
151	1880 320003	调整垫片	Adjusting shim	1	
152	1880 320004	调整垫片	Adjusting shim	1	
153	1880 320005	调整垫片	Adjusting shim	1	
154	1880 320006	调整垫片	Adjusting shim	1	
155	1880 320007	调整垫片	Adjusting shim	1	
156	1880 320008	调整垫片	Adjusting shim	1	
157	1880 320009	调整垫片	Adjusting shim	1	
158	1880 320010	调整垫片	Adjusting shim	1	
159	1880 320011	调整垫片	Adjusting shim	1	

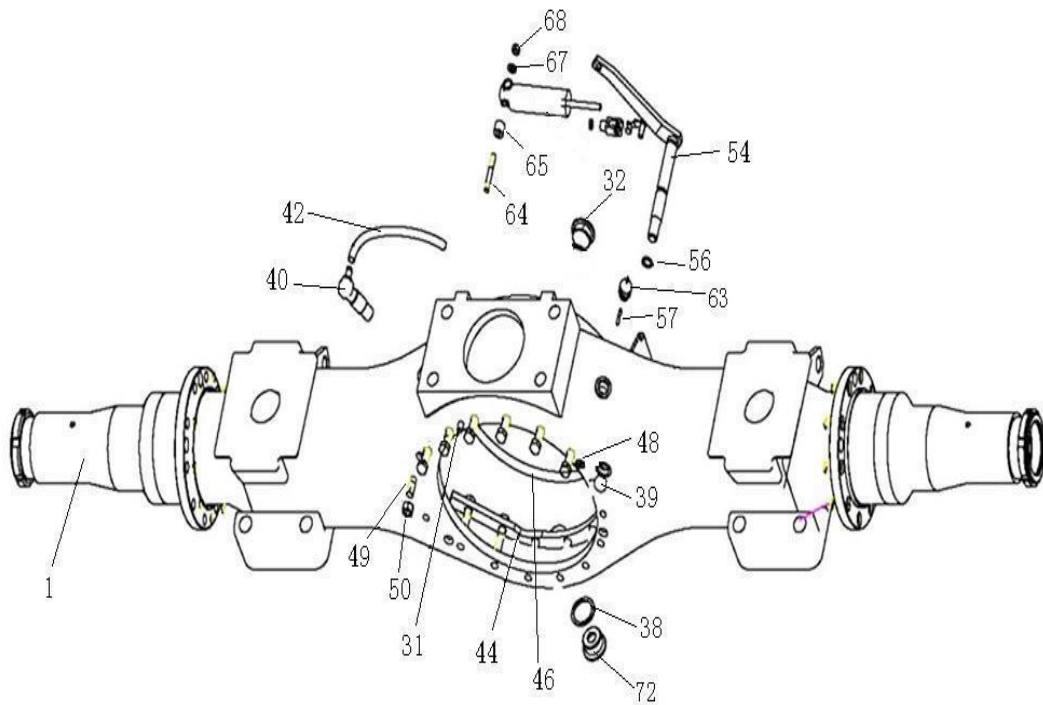
4.03 ST16单后桥壳(板簧座中心距1010)/Single Rear Axle Housing



4.03 ST16单后桥壳(板簧座中心距1010)/Single Rear Axle Housing

序号	零部件图号	名称	Part Name	数量	备注
No.	Part No.			Qty	Remark
1	AZ9231330562	ST16单后桥壳总成(轮距1850, 170X145)	Rear axle housing ass.	1	
2	AZ9231330564	ST16桥壳中段总成	The middle part of axle housing assembly	1	
3	AZ9231330563	ST16桥壳中段(170x145)	The middle part of axle housing	2	
4	AZ9231330561	轴头	Shaft	2	
5	WG9231330572	固定盘	Flange plate	2	
9	WG26012330150	连接板	Plate	1	
11	WG9231330521	U形架	Bracket	2	
13	WG9231330520	固定支座	Bracket	2	
17	1680 330026	凸台	Base	1	
18	159000330019	凸台	Base	1	
19	WG9012330015	管	Tube	2	
21	WG9231330501	导向板	Guide plate	2	
23	WG9900410038	防护片	Shim	1	
25	199012330044	凸台	Base	1	
26	WG9012330005	板	Plate	1	
28	WG680340013	园螺母(右)	Nut	1	
30	1680 340014	圆螺母(左)	Nut	1	
31	Q5211016	园柱销	Pin	1	
32	WG81500010163	螺塞	Plug	1	
38	Q72336	密封垫圈—Q72336铝L1M, GB3190	Gasket	1	

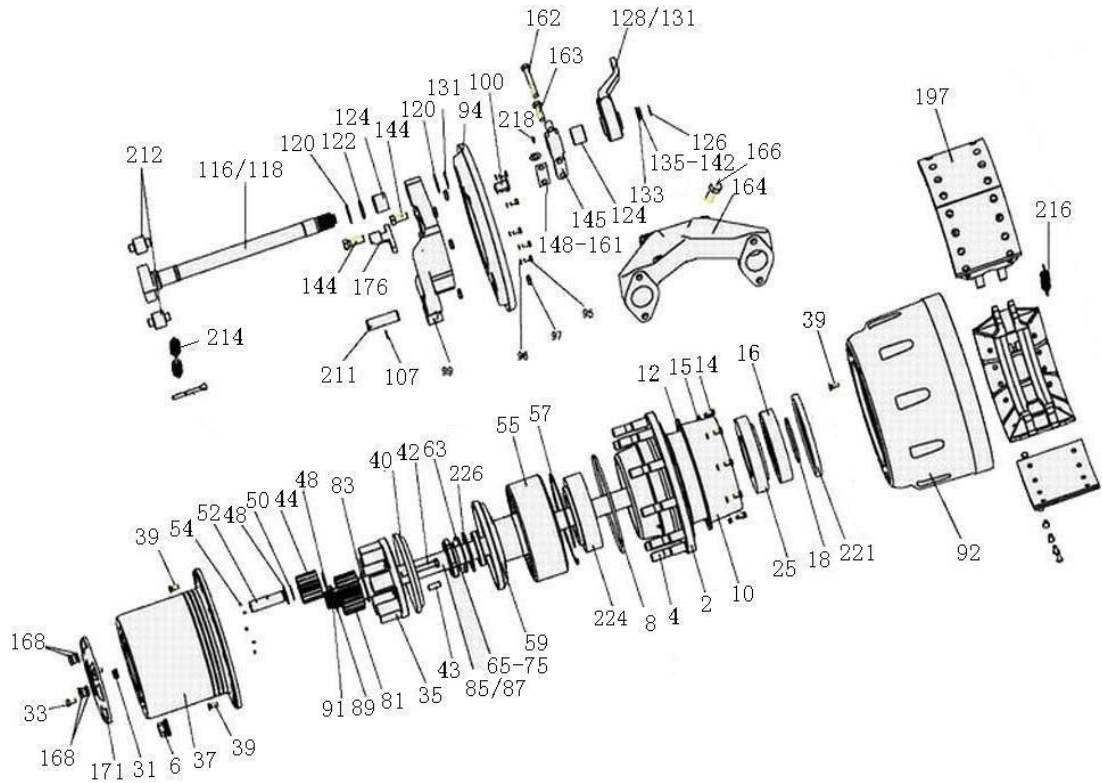
4.03 ST16单后桥壳(板簧座中心距1010)/Single Rear Axle Housing



4.03 ST16单后桥壳(板簧座中心距1010)/Single Rear Axle Housing

序号	零部件图号	名称	Part Name	数量	备注
No.	Part No.			Qty	Remark
39	190003989290	碗形堵塞	Plug	1	
40	WG9231330105	通气塞	Breather	1	
42	WG9231330106	橡胶软管	Hose	1	
44	WG9014330146	弓形固定卡总成(下)	Clip assembly	1	
46	WG9014330147	弓形固定卡总成(上)	Clip assembly	1	
48	Q2540820	十字槽沉头螺钉	Screw	4	
49	190003810631	双头螺柱	Stud	4	
50	190003888457	自锁螺母	Nut	16	
51	WG2297Y4835	铭牌	Name plate	1	
53	190003904529	标牌铆钉—铆钉GB827-86-2.5*6	Rivet	2	
54	WG9014330125	操纵杆总成	Lever assembly	1	
56	1680M 320015	O型垫圈	O-ring	1	
57	WG69000330008	销	Pin	1	
59	WG69000330009	销	Pin	1	
61	WG9100330010	销 见69000330008	Pin	1	
63	Q43705	轴用钢丝挡圈	Circlip	1	
64	Q1200850F3	双头螺柱	Stud	1	
65	WG61000060084	间隔衬套	Bushing	1	
67	Q40108	平垫圈	Washer	1	
68	Q33208	2型全金属六角锁紧螺母	Nut	1	

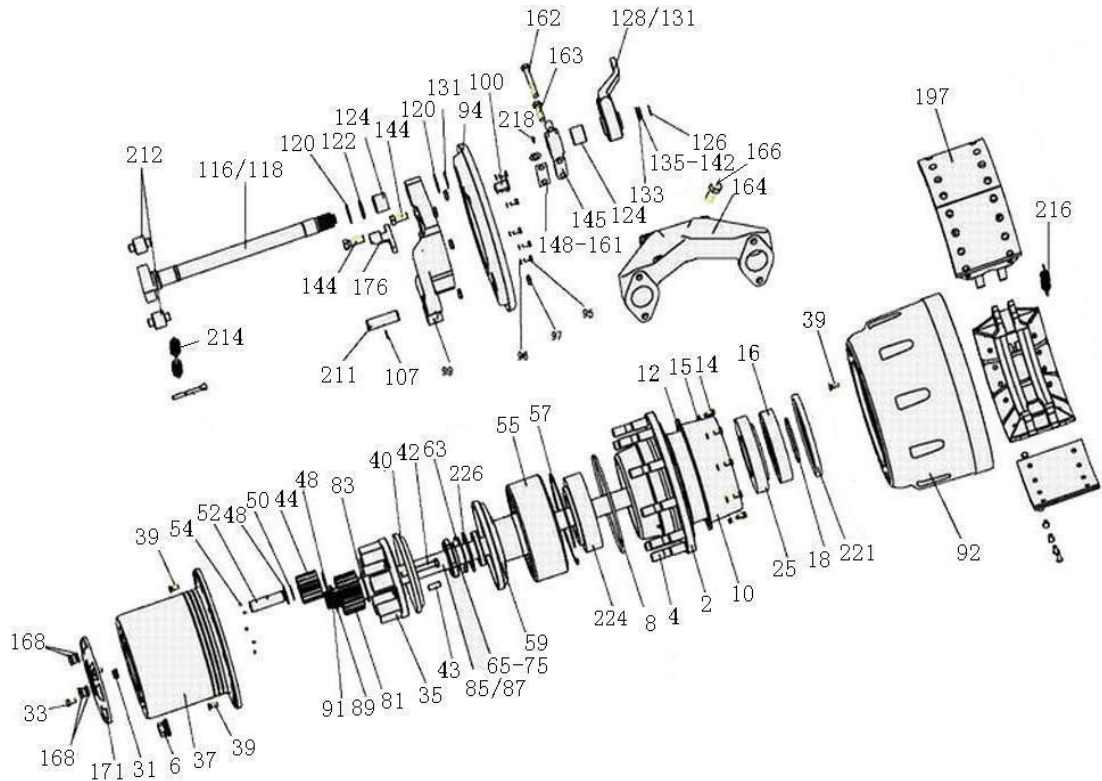
4.04 ST16后桥轮毂与制动器总成(1850)/Rear Axle Hub And Brake System



4.04 ST16后桥轮毂与制动器总成(1850)/Rear Axle Hub And Brake System

序号	零部件图号	名称	Part Name	数量	备注
No.	Part No.			Qty	Remark
1	199112340010	后轮毂总成	Rear wheel hub ass.	2	incl. (2,4)
2	WG9112340009	后轮毂	Rear wheel hub	1	
4	WG9112340123	车轮螺栓(后)	Screw	10	
6	WG9003884160	车轮螺母	Nut	20	
8	WG9012340029	密封圈	Sealing ring	4	
10	WG9012340021	挡油罩	Cover	2	
12	WG9012340020	密封垫片	Sealing washer	2	
14	Q150B0816	六角头螺栓	Screw	20	
15	Q40308	弹簧垫圈	Spring washer	20	
16	WG9012340017	隔圈	Spacer ring	2	
18	WG9012340027	密封圈	Sealing ring	2	
25	190003326067	圆锥滚子轴承	Tapered roller bearing	2	
31	WG9012340011	端盖顶销	Pin	2	
33	Q150B1018	六角头螺栓	Screw	20	
34	199112340029	行星架总成	Planet carrier ass.	2	incl. (35,37)
35	199112340018	行星架	Planet carrier	1	
37	199012340069	轮边减速器壳	Hub reduction gear housing	1	
39	Q2541025	十字槽沉头螺钉	Screw	8	
40	WG880420027	行星架挡油盘	Oil baffle plate	2	
42	Q151C1295TF2	六角头螺栓	Screw	10	

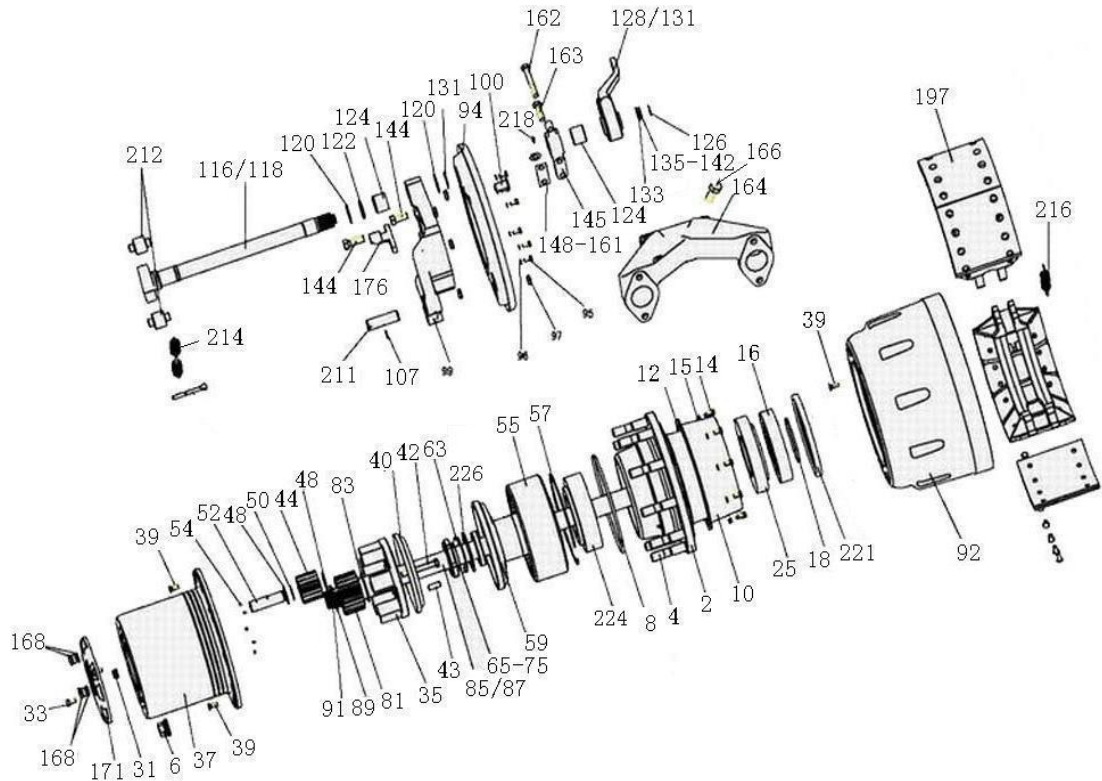
4.04 ST16后桥轮毂与制动器总成(1850)/Rear Axle Hub And Brake System



4.04 ST16后桥轮毂与制动器总成(1850)/Rear Axle Hub And Brake System

序号	零部件图号	名称	Part Name	数量	备注
No.	Part No.			Qty	Remark
89	WG880 410097	垫圈	Washer	2	
91	190003933351	轴用弹性挡圈	Snap ring	2	
92	WG9112340006	后制动鼓	Rear brake drum	2	
94	WG1880340018	制动器防尘罩	Dustproof cover	2	
95	Q150B0816	六角头螺栓	Screw	12	
96	Q40308	弹簧垫圈	Spring washer	12	
97	WG880340037	密封圈	Sealing ring	8	
99	AZ9231340562	制动底板	Brake base plate	2	
100	WG9112340010	ABS传感器输出保护套	Protection sleeve of ABS sensor	2	
107	Q5280624	弹性园柱销	Cylinder pin	4	
116	WG9231340226	制动凸轮轴(左)	Brake camshaft-left	1	
118	WG9231340227	制动凸轮轴(右)	Brake camshaft-right	1	
120	WG880440010	附加垫片	Gasket	4	
122	WG880340023	O形密封圈	O ring	2	
124	WG9100340017	复合衬套	Bush	4	
126	190003933300	轴用弹性挡圈	Snap ring	2	
128	WG9100340056	间隙调节臂总成(左)	Slack adjusting device - left	1	
131	WG9100340057	间隙调节臂总成(右)	Slack adjusting device - right	1	
133	WG880340022	垫圈	Washer	2	
135	WG80 320028	调整垫圈	Adjusting shim	1	

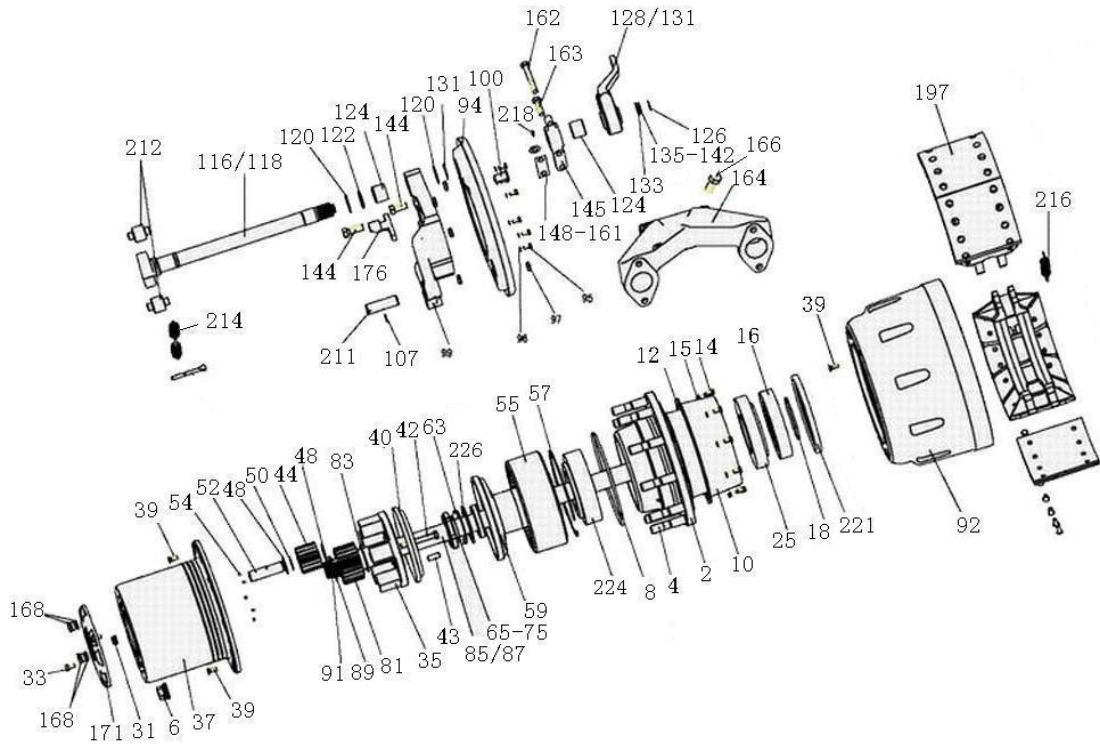
4.04 ST16后桥轮毂与制动器总成(1850)/Rear Axle Hub And Brake System



4.04 ST16后桥轮毂与制动器总成(1850)/Rear Axle Hub And Brake System

序号	零部件图号	名称	Part Name	数量	备注
No.	Part No.			Qty	Remark
137	WG80 320029	调整垫圈	Adjusting shim	1	
139	WG80 320030	调整垫圈	Adjusting shim	1	
141	WG80 320046	调整垫圈	Adjusting shim	1	
143	190003933116	轴用弹簧档圈	Snap ring	2	
144	Q151B1635TF2	六角头螺栓	Screw	20	
145	199014340041	凸轮轴支架	Bracket of camshaft	2	
148	WG880340031	调整垫片(厚0.1)	Adjust shim	1	
150	WG880340032	调整垫片(厚0.15)	Adjust shim	1	
152	WG880340033	调整垫片(厚0.4)	Adjust shim	1	
154	WG880340034	调整垫片(厚1.0)	Adjust shim	1	
156	WG3809470031	调整垫片	Adjust shim	1	
158	WG3809470032	调整垫片	Adjust shim	1	
160	WG3809470033	调整垫片	Adjust shim	1	
162	Q151B1490	六角头螺栓	Screw	2	
163	Q151B1445	六角头螺栓	Screw	2	
164	WG9012340066	气室支架	Air chamber bracket	1	
166	Q151B2040TF2	六角头螺栓	Screw	4	
168	WG9231340002	圆柱头内六角螺塞总成	Plug ass.	4	
171	WG9231340001	端盖	Cover	2	
176	AZ9231340556	ABS传感器支架	ABS sensor bracket	2	

4.04 ST16后桥轮毂与制动器总成(1850)/Rear Axle Hub And Brake System



4.04 ST16后桥轮毂与制动器总成(1850)/Rear Axle Hub And Brake System

序号 No.	零部件图号 Part No.	名称	Part Name	数量 Qty	备注 Remark
197	AZ9231340200	制动蹄带衬片总成	Brake shoe assembly	4	incl.(198,208,210)
198	AZ9231340203	制动蹄总成	Brake shoe	1	incl.(203,206)
203	WG9231340209	支承销	Pin	2	
206	WG9231340216	回位弹簧销	Spring pin	1	
208	WG9200340069	提升型制动摩擦片	Brake lining	2	
210	WG9231340068	铆钉	Rivet	16	
211	199000340064	支销	Pin	4	
212	WG9000340027	滚轮	Roller	4	
214	WG9231342015	回位弹簧	Return spring	2	
216	WG9112340049	回位弹簧	Return spring	4	
218	AZ9003963030	滑脂嘴总成	Grease nozzle ass.	2	incl.(219, 220)
219	190003963112	米制锥螺纹滑脂嘴	Grease nozzle	1	
220	AZ9003963010	滑脂嘴帽	Grease nozzle cap	1	
221	WG9981340113	轴密封圈	Sealing ring	2	
223	Q5003220	开口销	Split pin	1	
224	WG9981032222	圆锥滚子轴承	Tapered roller bearing	2	
226	WG9231340034	止推垫环	Thrust washer	2	
228	WG9231340201	面板	Plate	1	
230	WG9231340202	腹板	Plate	2	
234	WG9231340208	加强板	Plate	2	